

## SAVING HYRULE COMES AT A COST \\\



### LINK'S GOING TO NEED A BIGGER POUCH...

Unlike previous games in the series, Link has the option to rent weapons from the bunny hat-clad Ravio in exchange for a few dozen rupees. This allows you to explore dungeons in any order, but should you die Ravio will come to collect. Buy items when they become available to save yourself some time when death becomes inevitable in tougher dungeons.

PURE EVIL



### THE ELEGANT, EVIL YUGA

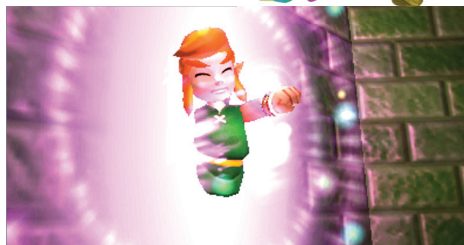
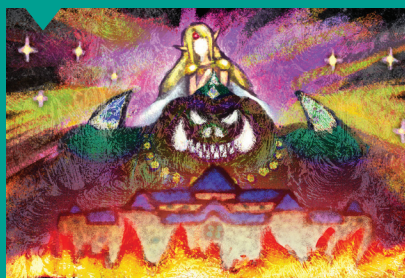
While he's not as powerful as series antagonist Ganon, Yuga's got a few tricks up his sleeve that will give you a run for your rupees.



## A TALE OF TWO WORLDS \\\

### SAY "HY" TO LORULE

Mirroring the Light/Dark World settings of *A Link to the Past*, Hyrule and its depressing, dark counterpart Lorule serve as this game's expansive overworlds. The story goes that Lorule had its own Triforce long ago and, in an attempt to end a civil war, it was irrevocably destroyed by its version of the Seven Sages. After Link is pulled into her realm, Princess Hilda, Lorule's last remaining royalty, has agreed to help him on his quest to rescue Zelda from Yuga's paint-spattered clutches and restore the Triforce to the land of Hyrule...or, at least, he hopes that's her intention.



▲ The limit of the 3DS' stereoscopic screen is tested over the game's 15-hour quest.



▲ The bow is one of many items from *LttP* that makes its way back into Link's arsenal.



▲ It turns out being a kidnapped princess of a besieged kingdom is harder than it looks.

3DS

## GAME DETAILS



THE LEGEND OF ZELDA:  
LINK BETWEEN WORLDS

### INFO

Publisher: Nintendo  
Developer: Nintendo  
Platforms: Nintendo 3DS

### RELEASE DATE

November 22, 2013

### MULTIPLAYER/ONLINE

Street Pass "Shadow Link"  
multiplayer battles

### GENRE

Action-RPG



### WHAT'S GREAT:

- ♥ Dungeons are difficult, but rewarding
- ♥ New setting of Lorule tells a unique story
- ♥ Offers a major dose of '90s nostalgia



### WHAT'S NOT SO GREAT:

- ✗ Probably won't excite folks who are just tired of the *Zelda* formula



### CHARLIE SAYS:

*Link to the Past's* universe with *Paper Mario*-style gameplay? Only Nintendo could recycle this well.

### OVERALL RATING:

4.5